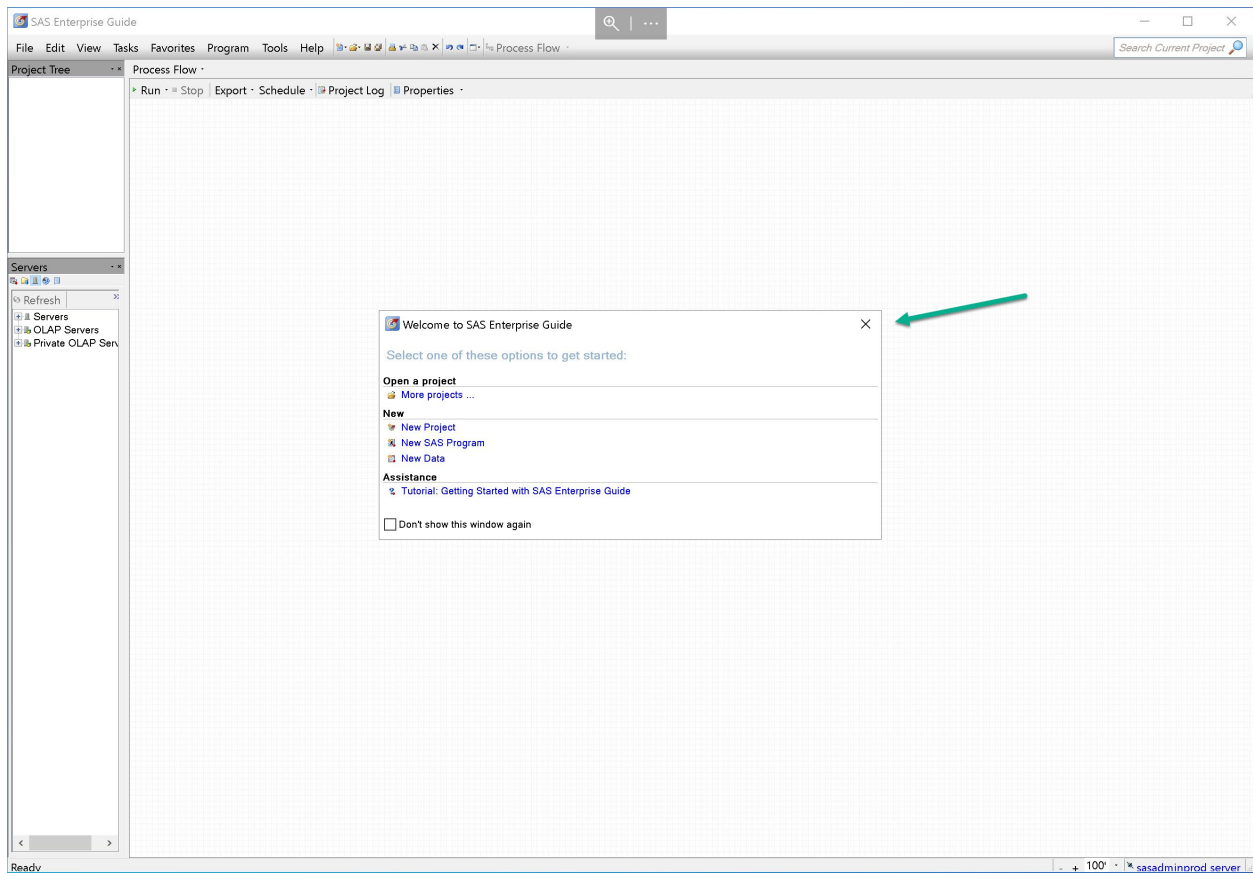
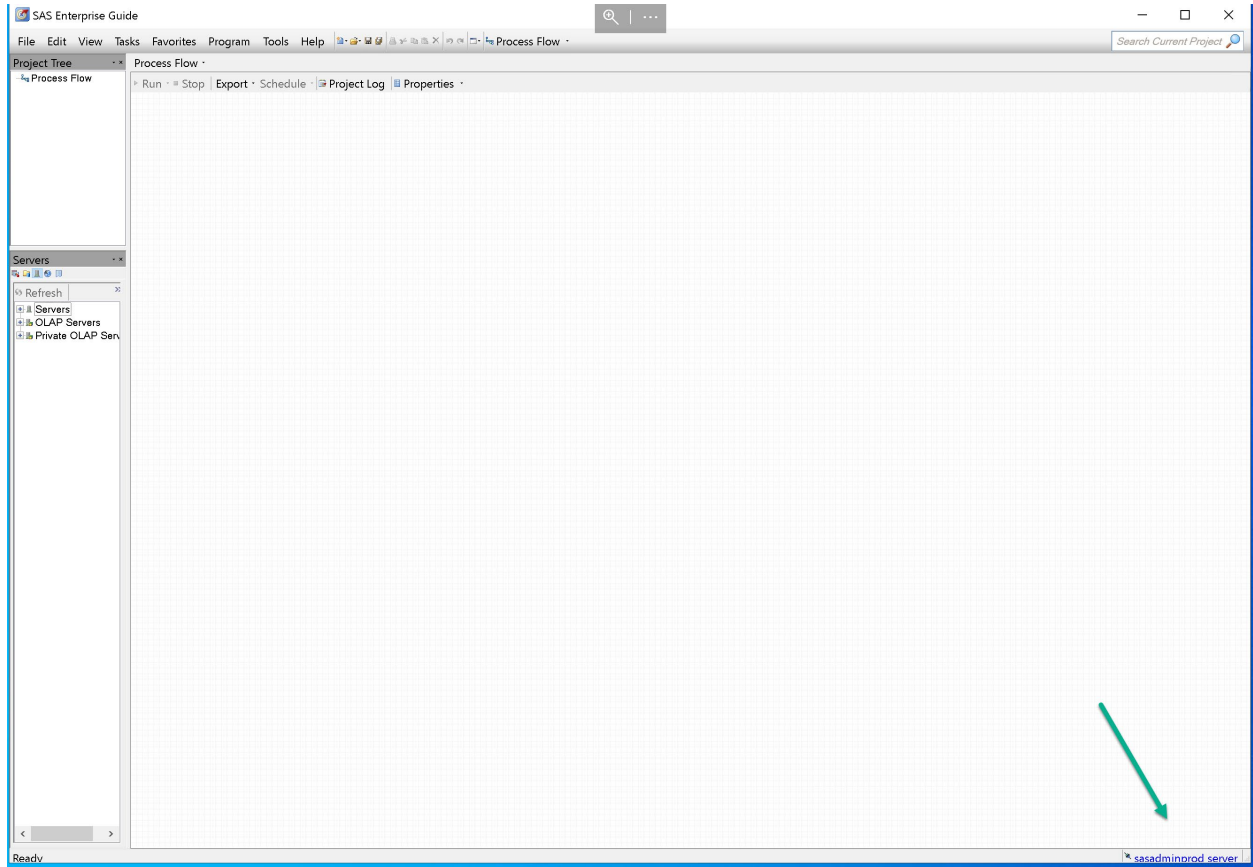


How to Change your connection profile to point from the old SAS server to the new SAS server in SAS Enterprise Guide 7.1.

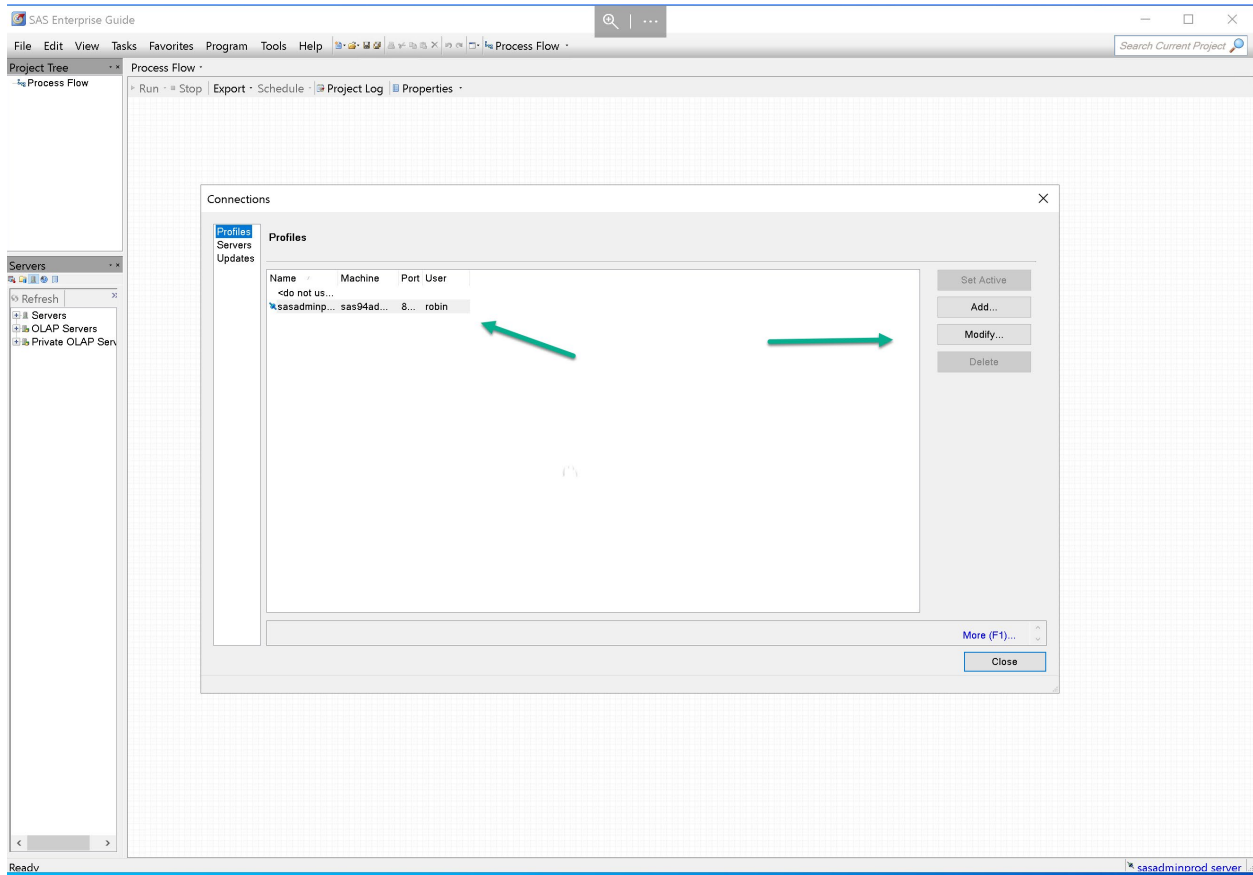
1. Launch SAS Enterprise Guide
2. Dismiss/close the Welcome screen.



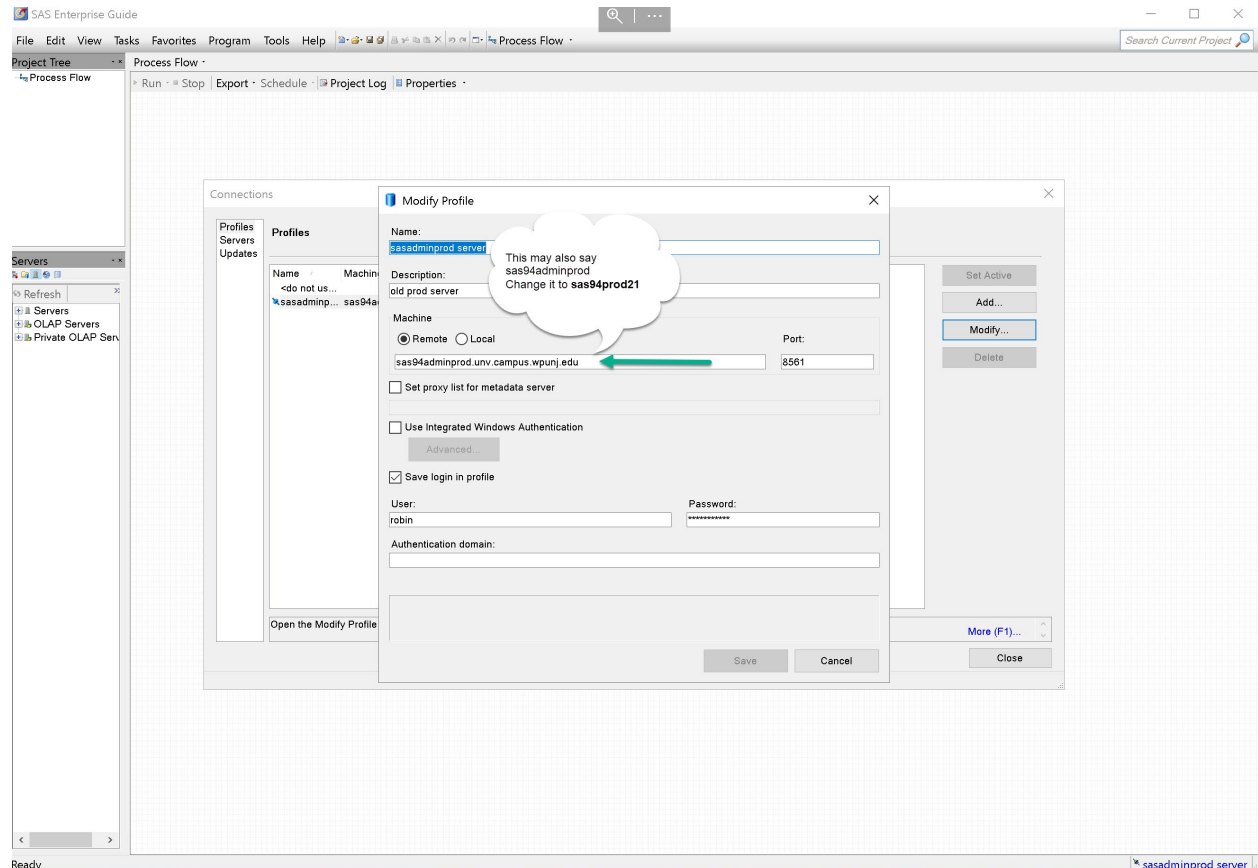
3. Double click the connection located at the bottom right of SAS Enterprise Guide

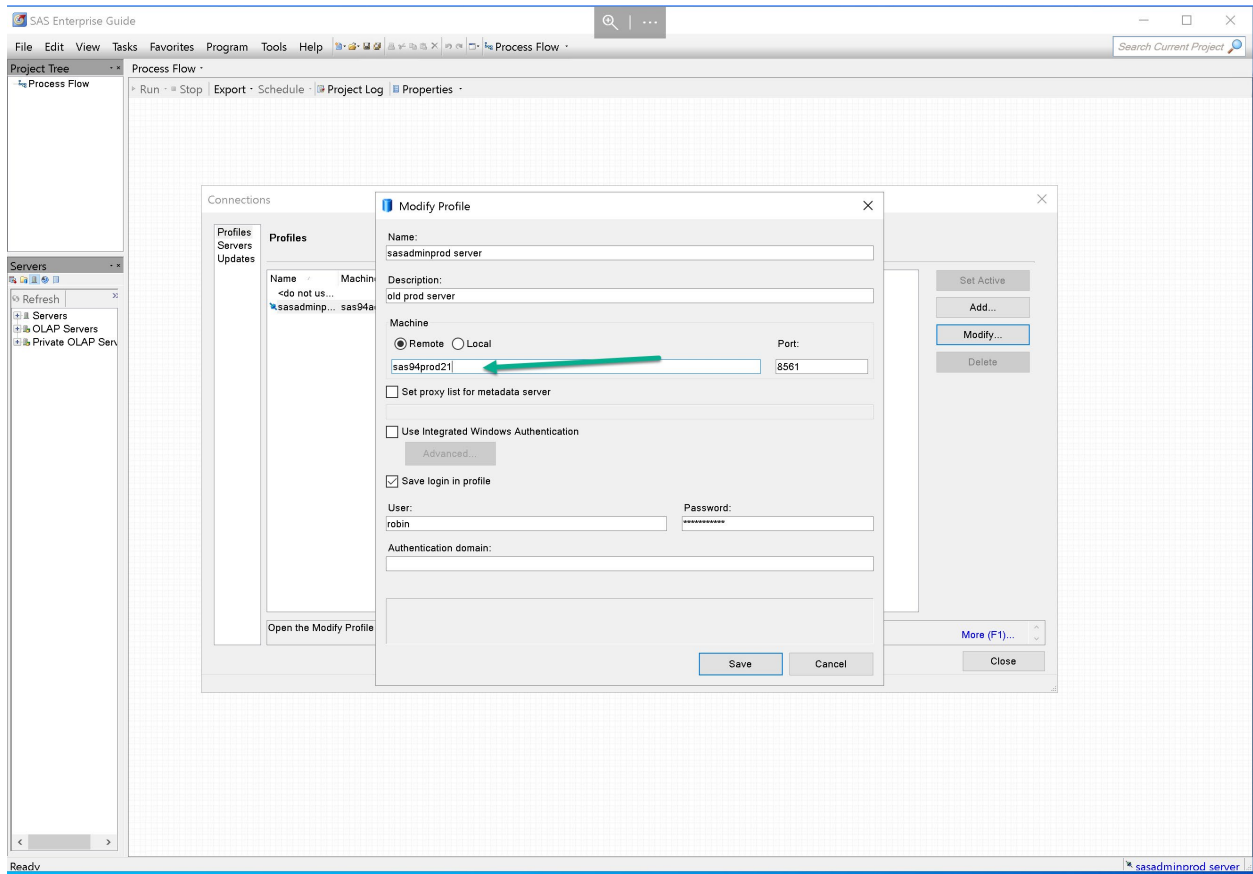


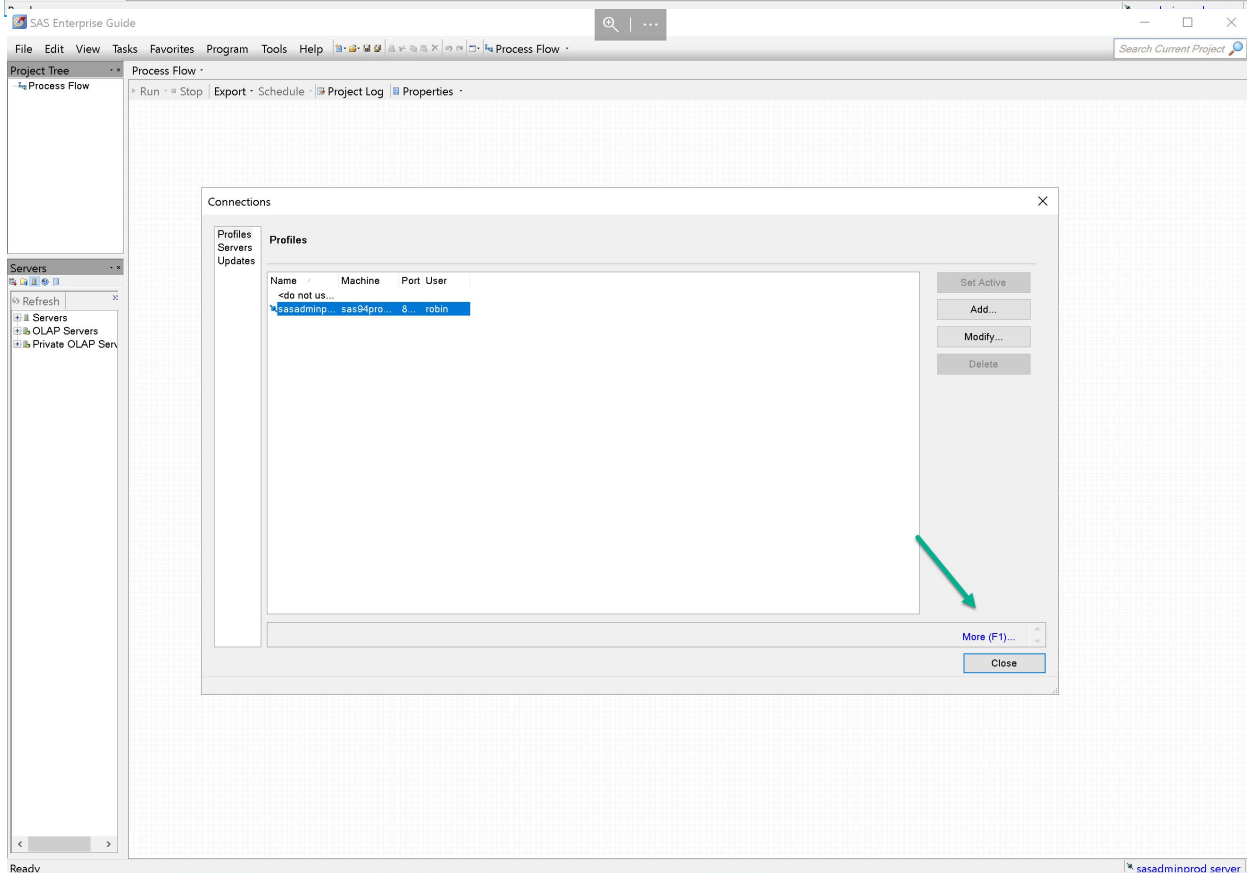
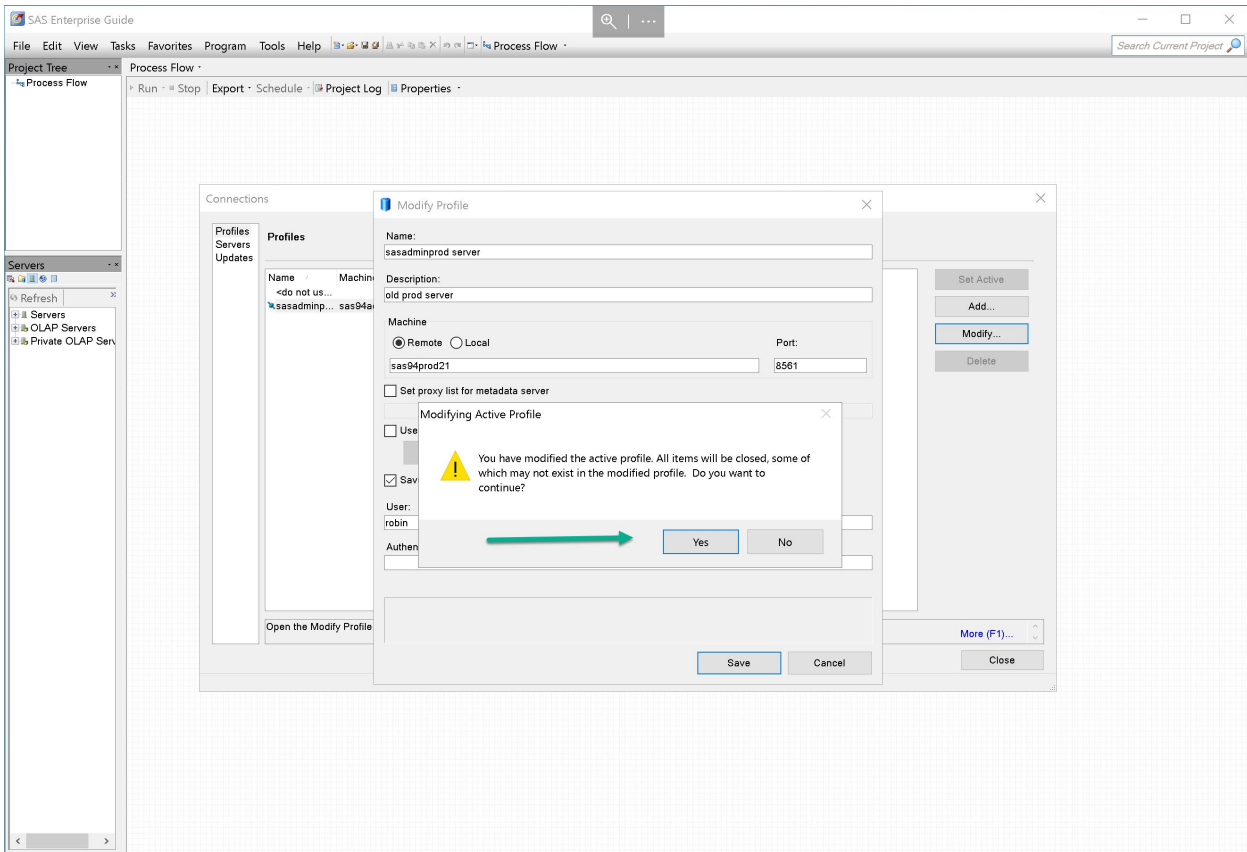
4. Highlight the profile and click modify.



5. Go to the session that says Machine and change the server from sas94adminprod (the machine name may also be sas94adminprod.unv.campus.wpunj.edu) to sas94prod21 and click save and say click yes to the warning. By clicking yes, you will be automatically connected to the new server. If you weren't connected, then click on Set Active.







You are all set:

If you run to any issues, please contact us for help.

Thanks,